



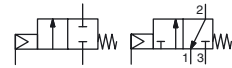
VALVES

pressure operated

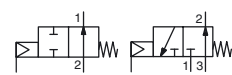
for superheated water and steam applications

3/8 .. 2 1/2 / DN 10 .. DN 65

NC



NO



2/2-3/2

Series

290

390

FEATURES

- Remote-controlled disc valve for superheated water and steam at temperatures up to 184°C
- High flow due to angled seat design
- Equipped with a piston-type operator
- Anti-waterhammer design (fluid entry under the disc)
- Wide range of operators (32, 50, 63, 90 and 125 mm) for maximum performance at different minimum pilot pressures
- Operator rotatable by 360°
- High performance, maintenance-free stuffing box
- Optical position indicator
- Proportional valves (see "Proportional valves" section)

GENERAL

Differential pressure: [1 bar = 100 kPa]
 Steam 0 to 10 bar
 Superheated water 0 to 16 bar
Maximum allowable pressure 16 bar

fluids	max. temperature (TS)	disc seal
steam, superheated water	+ 184°C	PTFE

2/2 CONSTRUCTION

Body

Connection:

Threaded
 Clamp
 Butt welding
 External threads
 External threads DIN 11851

Flanges (PN16)

See catalogue page:

Threaded
 Clamp
 Butt welding
 External threads
 External threads DIN 11851
 Flanges

Bronze body

Bronze

1/2 to 2 1/2 (type 01)
 -
 -
 -
 -
 DN 25 to 50 (type 03)

V410
 -
 -
 -
 -
 V431

Stainless steel body

Stainless steel ⁽¹⁾

3/8 to 2 1/2 (type 02)
 DN 10 to 65 (type 04)
 DN 10 to 65 (type 05)
 1/2 to 1 (type 06)
 DN 10 to 20 (type 07)
 (RD 28x1/8 .. RD 44x1/6)
 -

V410/V438
 V420
 V420
 V412
 V414
 -

3/2 CONSTRUCTION

Body

Connection:

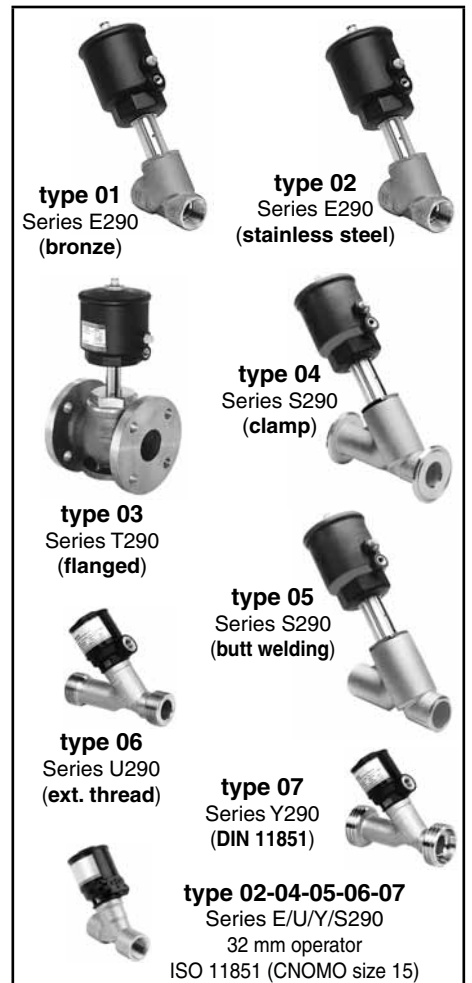
Threaded
See catalogue page:

Bronze body

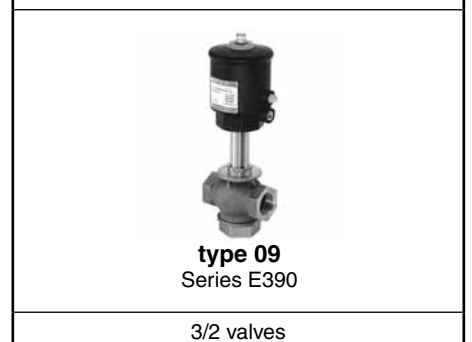
Bronze

1/2 to 2 (type 09)
 V703

⁽¹⁾ All stainless steel AISI 316L, contact us.



2/2 valves



3/2 valves